

Lake Wallenpaupack Watershed Management District



“Working together to protect OUR lake”

WHAT is the Lake Wallenpaupack Watershed Management District?

-501 (c)(3) Non-profit corporation

(YES, that means your financial contributions are tax-deductible)

-Founded in 1979 in response to poor water quality

-Leader, providing guidance in protecting and improving Lake Wallenpaupack and its tributaries



Founding Ceremony- September, 1979

WHO is the Lake Wallenpaupack Watershed Management District?



Governed by Board of Directors

- County Commissioners
- Township Supervisors
- Conservation Districts
- County Representatives
- PPL
- Marine Trades Association
- Wastewater Plant Operator
- Lake Watch (LWWA)
- At-Large

Where we come from

- Conservation Experts
- Farmers
- Builders, Bankers, Realtors
- Business Owners
- Engineers and Planners
- Elected Officials
- Educators

Most importantly.... We're your neighbors!



What is a watershed?

?????

NOT a watershed!



Lake Wallenpaupack Watershed

-219 Square Miles

-4 counties

-14 municipalities

Other Facts

-52 miles of shoreline

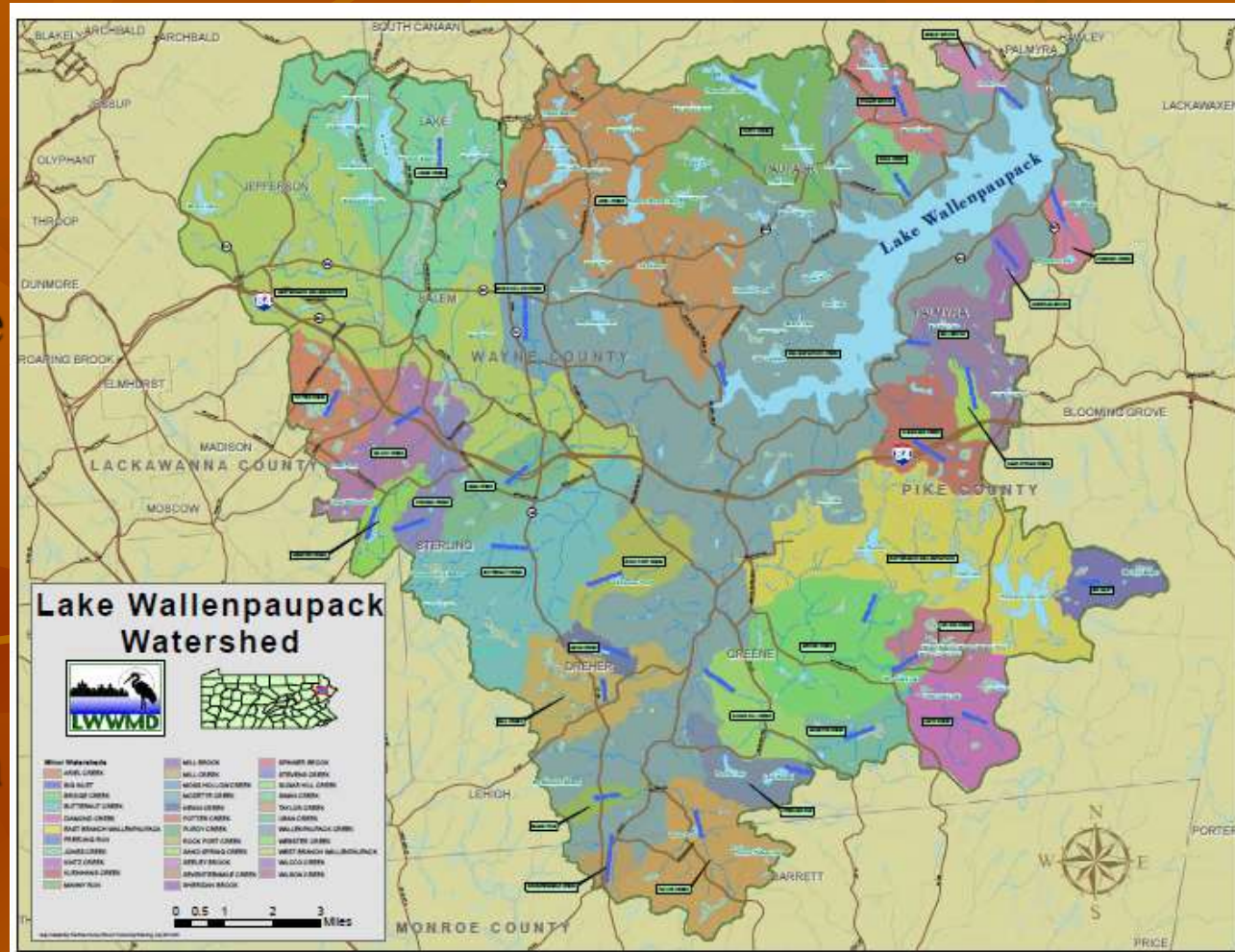
-13 miles long

-35' average depth

-60' max. depth

**-5700 acres of water
(8.9 square miles)**

**-Capacity of between
31 and 47 billion
gallons, or 61,904
Olympic Sized
Pools**



Why manage our watershed?

Our economy and quality of life directly depend on it!!!

Primary Economic Benefits

- Restaurants/Resorts
- Businesses
- Real Estate
- Recreation

Secondary Economic Benefits

- Insurance
- Retailers
- Services
- Trades



-Hydroelectric Production -Habitat -Human Health



Major Events Timeline

- **1980- EPA Phase I Diagnostic Feasibility Study (Clean Lakes Funding)**
 - Lake and stream monitoring
 - Produced first watershed management plan
- **1987- EPA Phase II Restoration Projects (completed 1993)**
 - \$479,000
 - Clean Lakes Program Funding
 - Included agricultural BMP's, streambank stabilization, urban stormwater, public education
 - Public Education also major component

- **1995 & 1997- 319 Nonpoint Source Program**
 - Continuation of installation of BMP's and creation of Educational curriculum for Wallenpaupack High School.
 - Education Curriculum won 1998 Governor's Award for Environmental Excellence in Environmental Education
 - Education Curriculum is still in use
- **1996- Added to 303(d) List for nutrients, suspended solids, and mercury**
- **1998-99 Two EPA Grants**
 - \$2.2 million
 - Watershed investigations, developing pollutant budgets.
 - Lake and tributary monitoring
 - Educational seminars, workshops,
 - Design and construction of NPS BMP's

- **USDA- Natural Resource Conservation Service**
 - **\$800,000**
- **2005- TMDL Completed**
 - **Targeting Total Phosphorous**
 - **Includes reduced P limits for STP's**
- **2001-12- PA Growing Greener Grants**
 - **\$249,580**
- **2011-Present – LWWMD Cost Share Program**
 - **\$313,000 of program funding matched by outside sources for total project costs of \$796,000**
 - **16 Shoreline Stabilization BMP's**
 - **10 Stormwater Controls**
 - **3 Streambank Stabilization BMP's**
 - **1 Agricultural Improvement**
- **2016 De-Listed (except mercury)**

How did
WE
address
eutrophication?



BMP

Best Management Practices



08/10/2004































3 Main Program Areas

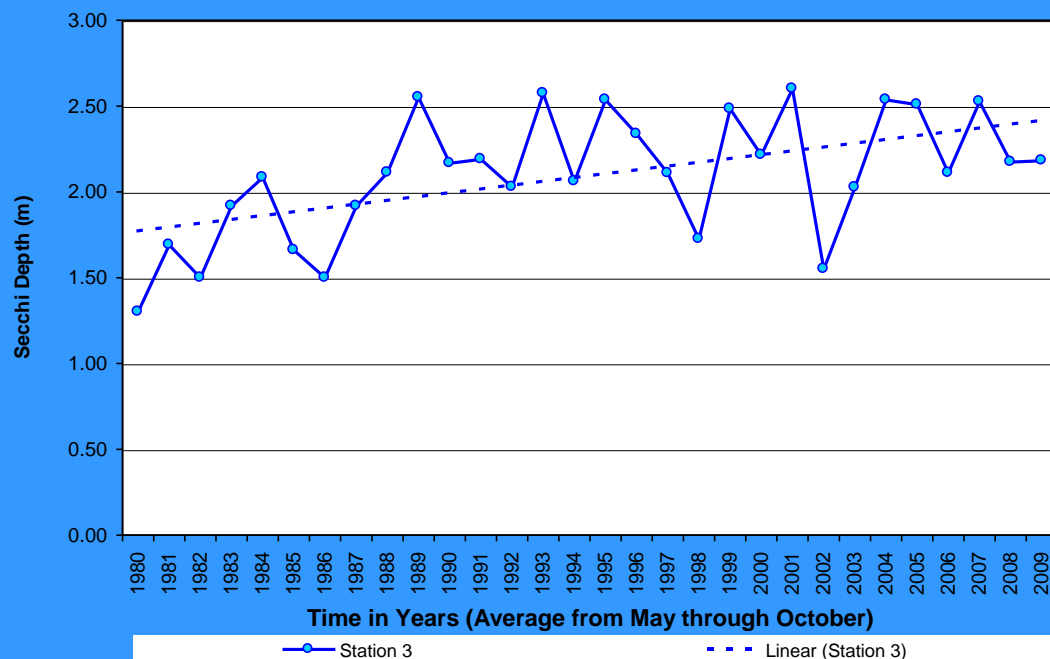
- 1) Research/Scientific Analysis
- 2) Education/Outreach
- 3) Best Management Practices



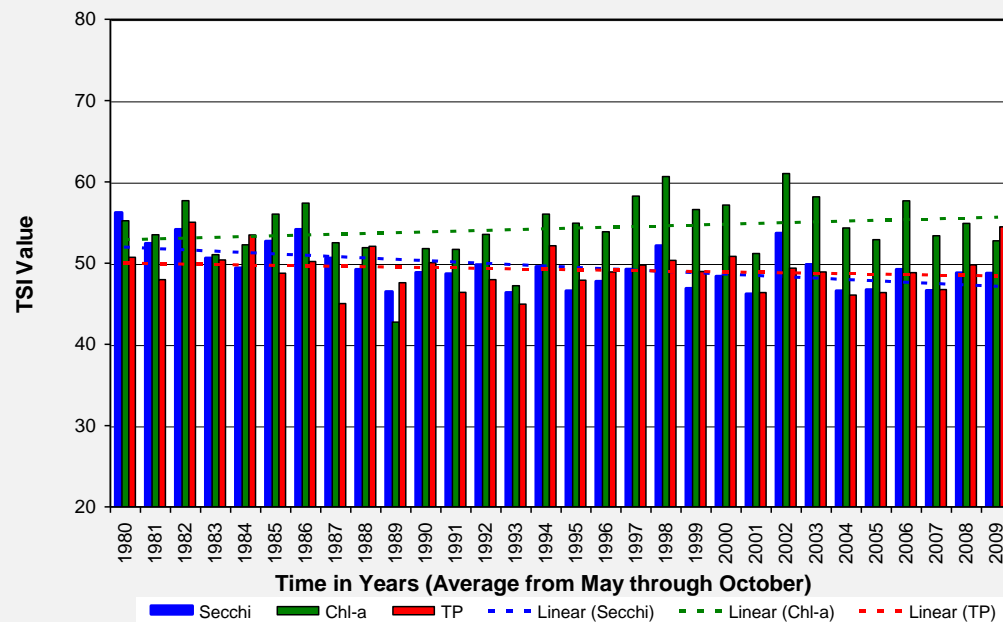
Water Quality Analysis

LWWMD has one of the most comprehensive and long-term datasets in the northeast

Secchi Depth - Lake Wallenpaupack
Station 3



Historical Carlson's TSI Values for Lake Wallenpaupack
Station 3



A continually developing plan....

2014 FINAL REPORT

Lake Wallenpaupack

2015 FINAL REPORT

*Lake Wallenpaupack
Water Quality Monitoring Program*

2016 FINAL REPORT

*Lake Wallenpaupack
Water Quality Monitoring Program*



Prepared for:



Lake Wallenpaupack Watershed
Management District
P.O. Box 143
Hawley, PA 18428

Prepared by:



Aqua Link, Inc.

Plant, Lake & Stream Management & Supplies
P.O. Box 685
Doylestown, PA 18901

Ph: 215.238.9125
www.aqualinkinc.com

LAKE WALLENPAUPACK WATERSHED MANAGEMENT PLAN



December 2006

PREPARED FOR:

Lake Wallenpaupack Watershed
Management District

PREPARED BY:

F. X. Browne, Inc.
Engineers - Planners - Scientists
Lansdale, Pennsylvania

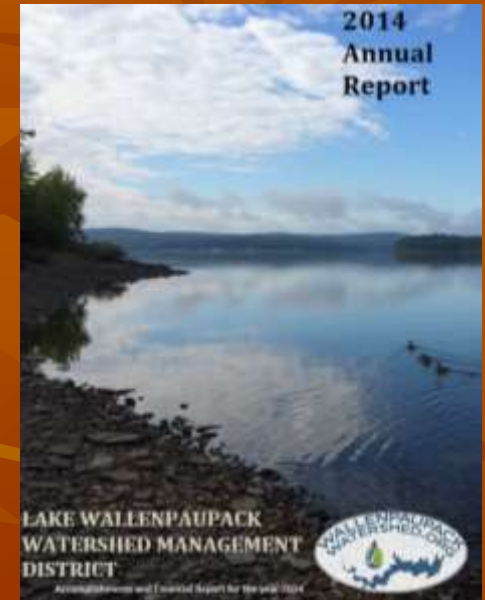
Education: A cultural and societal change



Education: A cultural and societal change



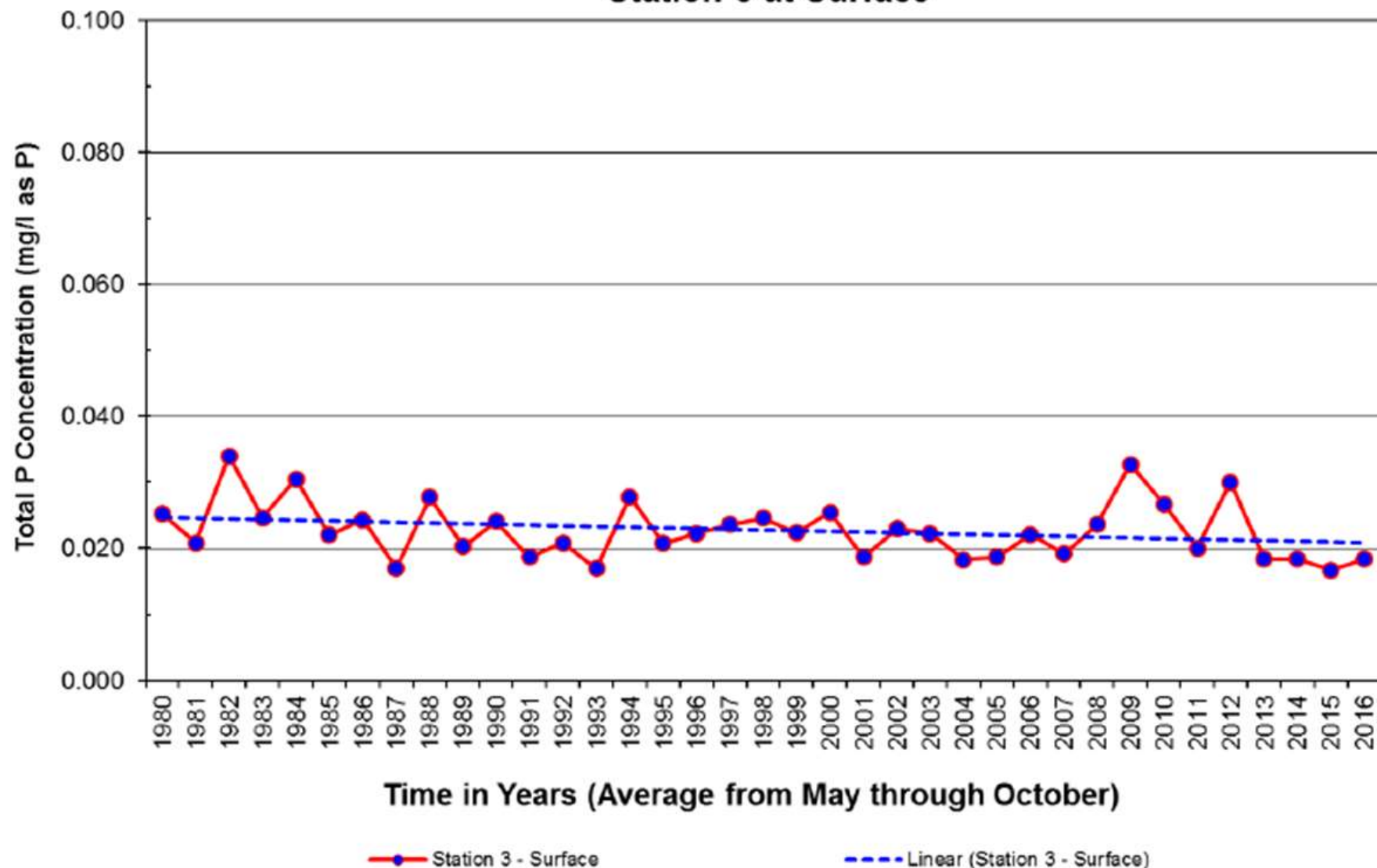
Outreach: Sharing is Caring!



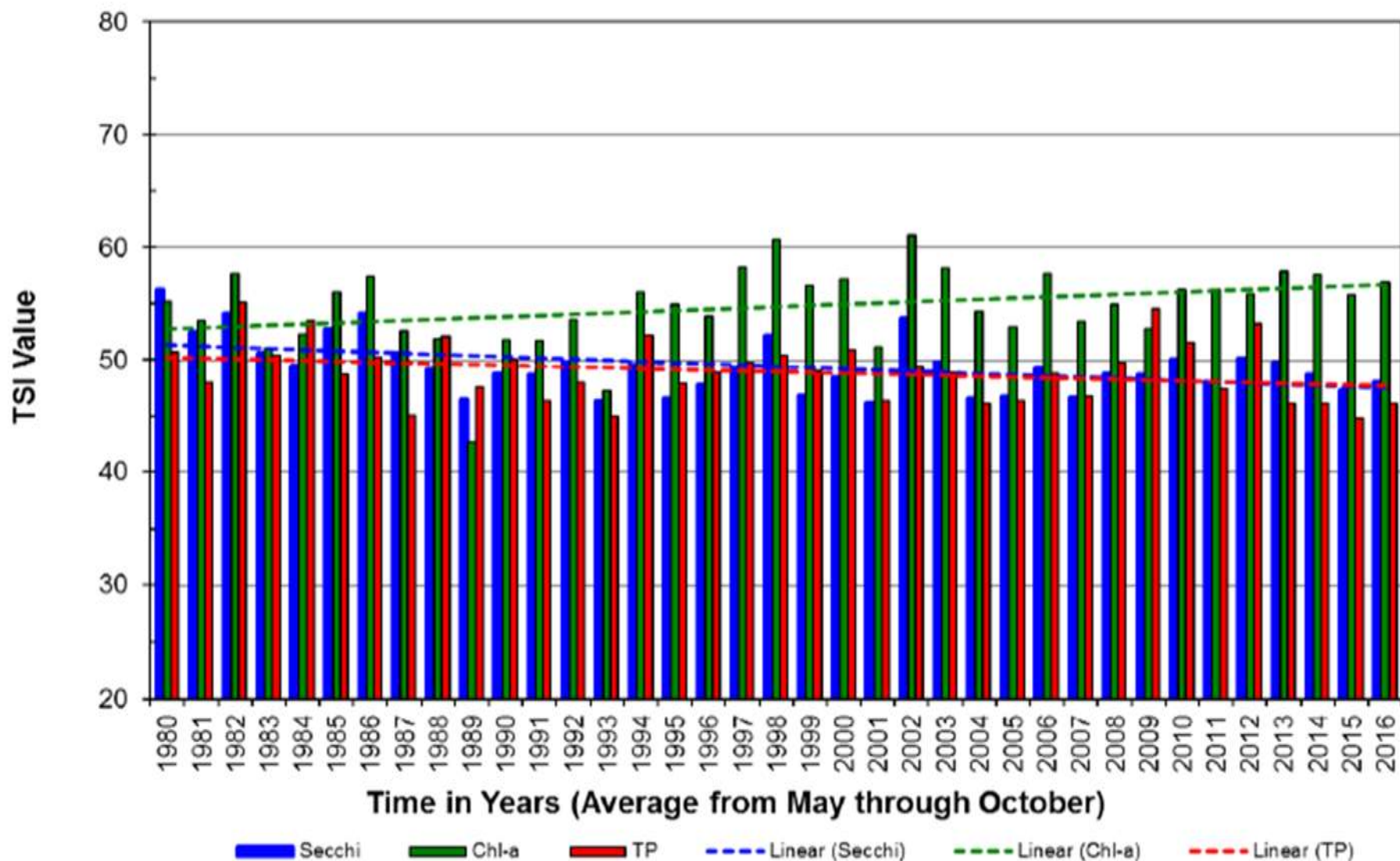
Friend-raising



Total Phosphorus Concentrations - Lake Wallenpaupack Station 3 at Surface



Historical Carlson's TSI Values for Lake Wallenpaupack Station 3



We're making a difference!



NONPOINT SOURCE SUCCESS STORY

Pennsylvania

Lake Wallenpaupack Improves After Best Management Practices and Outreach are Implemented to Reduce Nonpoint Source Pollution

