

# **North Branch Neshaminy Creek Phase II**



**Annual 319 Program Grantees Meeting**  
**April 5, 2017**



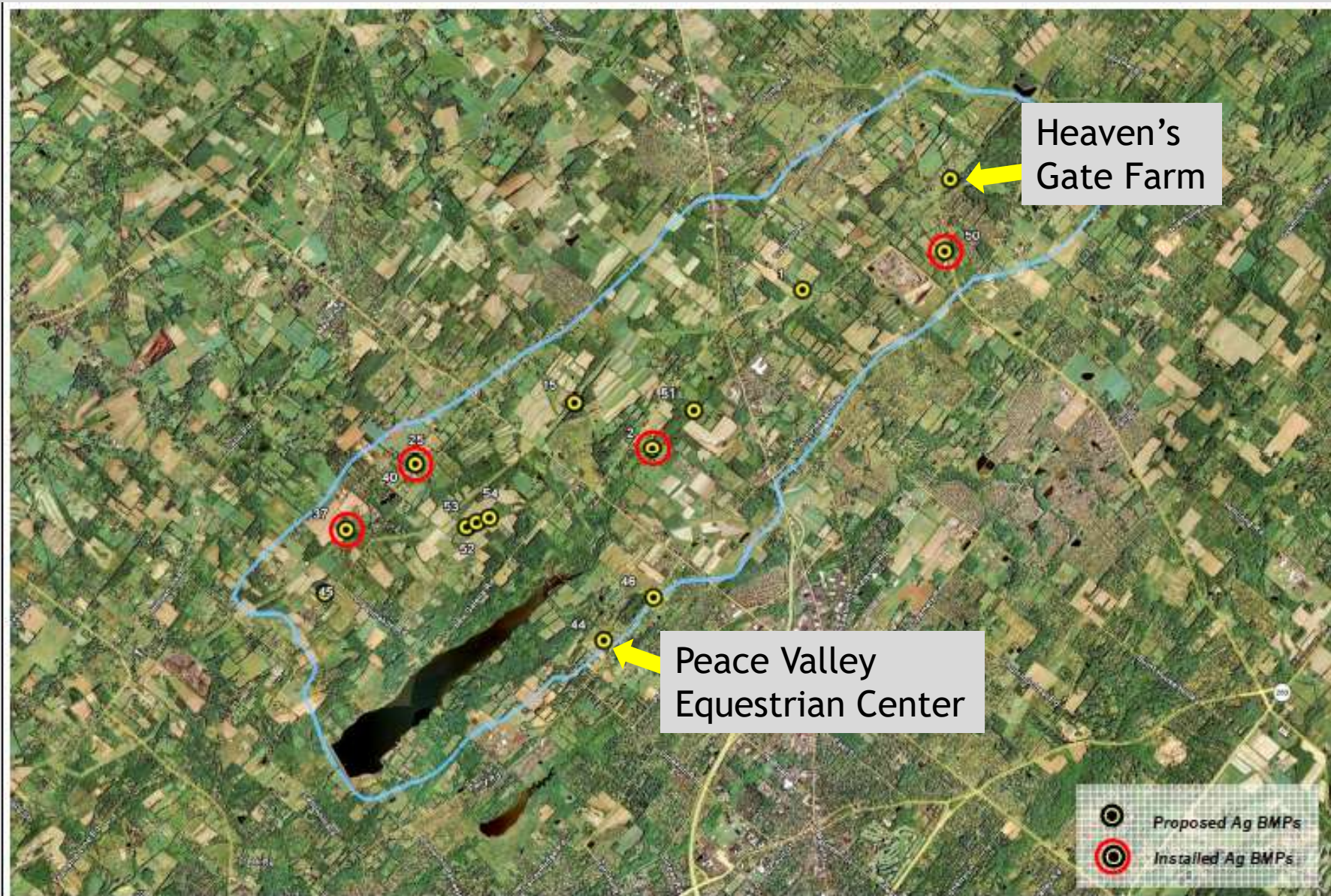


Figure 2 Locations of Installed Agricultural BMP Projects  
Lake Galena Watershed





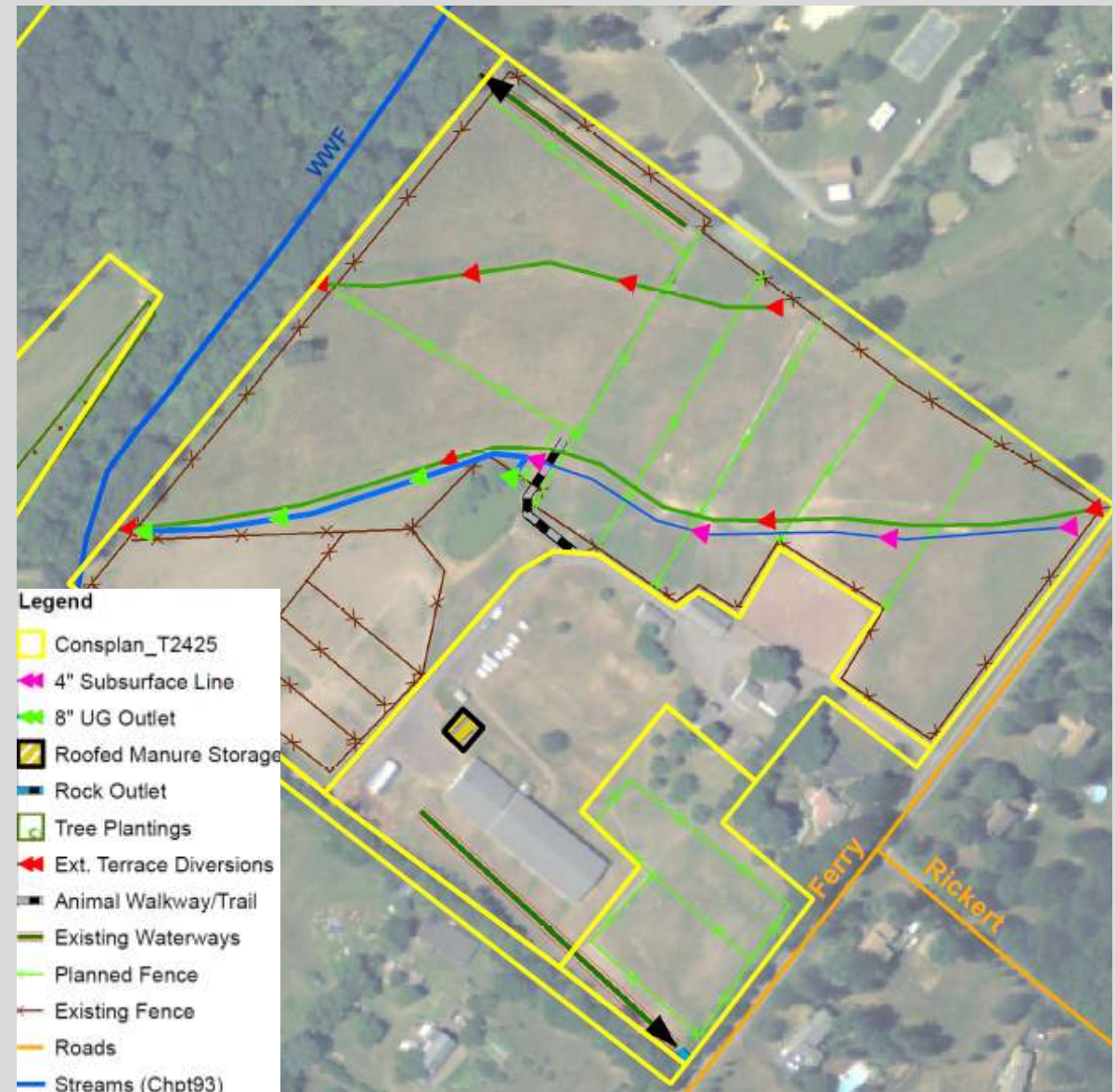
# Peace Valley Equestrian Center

- 27 acre equine facility
- Tributary to Lake Galena
- Resource concerns
  - Nutrients
  - Sediment/Erosion



# PVEC BMPs

- Roofed Manure Storage
- Pasture Management
- Subsurface Drainage/Grassed Diversion
- Level Lip Spreader
- Buffer Enhancement





# Subsurface Drain and Grassed Diversion

## Before



## After



- To divert water away from animal concentration areas



# Manure Storage

## Before



## After





# Level Lip Spreader

## Before



## After



- To stabilize existing waterway outlet along Ferry Road





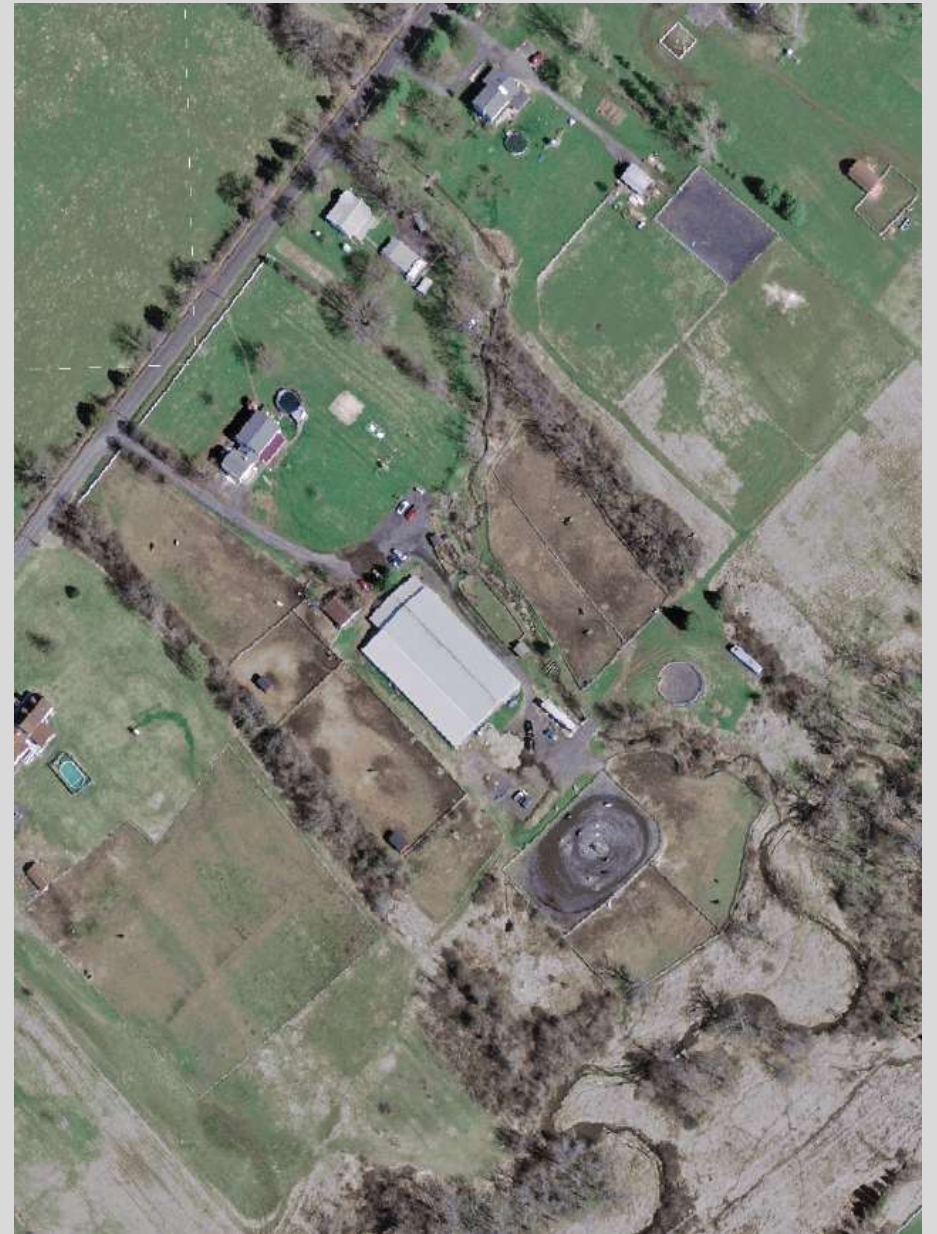
# Buffer Enhancement (TreeVitalize Watersheds)





# Heaven's Gate Farm

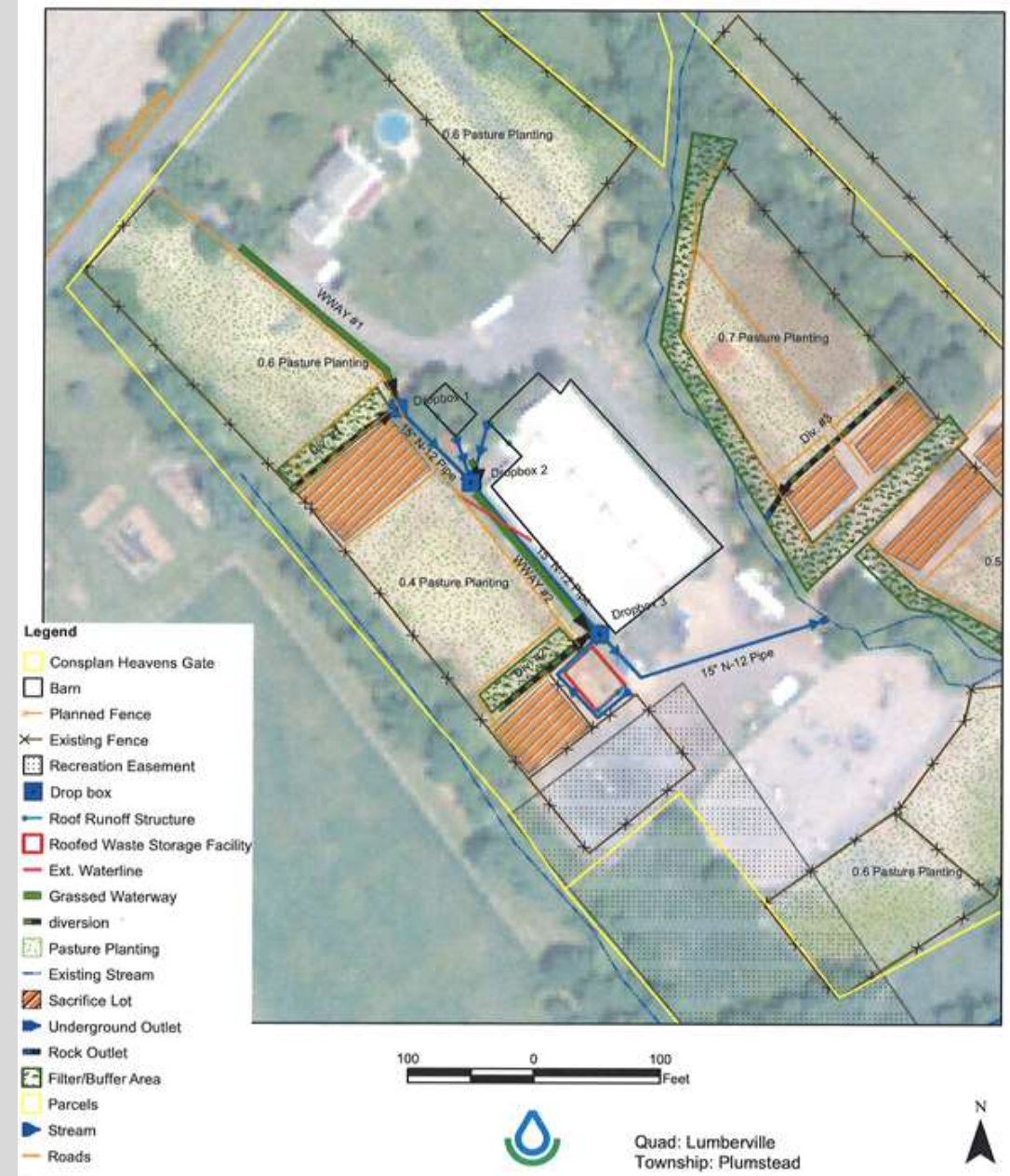
- 11 acre equine facility
- Concentrated Animal Operation (CAO)
- Headwaters of NBNC watershed
- Bisected by unnamed tributary
- Resource concerns
  - Nutrients
  - Sediment/erosion





# Heaven's Gate Farm BMPs

- Heavy Use Areas (HUAs)
- Grassed Diversions (& Rock Outlets)
- Grassed Waterways
- Underground Outlet
- Roofed Manure Storage
- Pasture Planting
- Riparian Buffer Planting





# Grassed Waterways

- Direct water around pastures and animal heavy use areas







- Direct water around pastures and animal heavy use areas and into waterways or tributary

## Grassed Diversions & Rock Outlets





# Riparian Buffer Planting

- Along tributary to NBNC





# Animal Heavy Use Areas

**Before**



**After**





# Pastures

## Before



## After





# Manure Storage

**Before**



**After**





# Challenges

- Operators/landowners
- Staff changes/leave
- Grant extension
- Budget changes
- Design changes

# Work Left To Do

- Fence and seed diversion
- Heavy use areas





# Questions?





Bucks County Conservation District  
1456 Ferry Road, Suite 704  
Doylestown, PA 18901

Meghan Rogalus  
Watershed Specialist  
215-345-7577 x107  
[mrogalus@bucksccd.org](mailto:mrogalus@bucksccd.org)

Olivia Rush  
Agricultural Conservation Technician  
215-345-7577 x104  
[orush@bucksccd.org](mailto:orush@bucksccd.org)

